

MarTest 800 S / 800 S-R / 800 SG / 800 SG-R / 800 SR / 800 SA / 800 SGA



Test Indicator

FEATURES

- Standard model
- High-contrast dial face, sealed with O-ring
- Mineral glass viewing panel for best protection:
 - against cracking, scratching or damage caused by hot shavings
 - optimum resistance to solvents
- Matt chrome-plated protective casing with three integrated dovetail guide rails
- Shockproof measuring mechanism
- Anti-magnetic model
- Automatic adjustment to the contacting direction ensuring infallible readings
- Ball bearing mounted double lever
- Friction clutch overload protection
- Package contains:** case, instruction manual, spanner for changing the styli, stylus dia. \varnothing 2 mm, mounting shaft 800a8



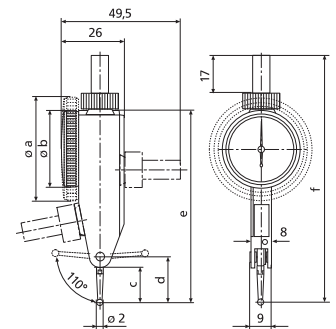
Application:

- Measurement of concentricity, alignment, parallelism and flatness
- Centering of bores and shafts
- Parallel or perpendicular alignment of work pieces

TECHNICAL DATA

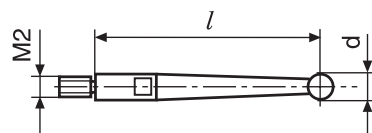
Order no.	4305200 4305205 4307200 4307205 4307250 4301200 4301250						
Product type	800 S		800 S-R		800 SG		800 SGA
Measuring range	mm		± 0.4		± 0.8		± 0.25
Graduation value	mm		0.01				
Measuring surface	carbide		ruby		carbide		ruby
Scale diameter	mm		28		38		28 38
Type of dial face			40-0-40				25-0-25
Dial color					Yellow		
Measuring force	N		0.15				0.1
Range per rev.	mm		0.8				0.5
Deviation range f_e	μm		10				5
Total deviation range f_{ges}	μm		13		14		8
Hysteresis f_u	μm		3		4		3
Partial measuring span f_t	μm				5		
Repeatability f_w	μm				3		
Standard			DIN 2270				Factory standard

Order no.	a	b	c	d	e	f	Measuring anvil length
	mm	mm	mm	mm	mm	mm	mm
4305200		30	13.6	17.8	75	99	14.5
4305205		30	13.6	17.8	75	99	14.5
4307200	40.5		13.6	17.8	75	99	14.5
4307205	40.5		13.6	17.8	75	99	14.5
4307250	40.5		13.6	17.8	75	99	14.5
4301200		30	13.6	17.8	75	99	14.5
4301250	40.5		13.6	17.8	75	99	14.5



ACCESSORIES

Order no.	Product name	Product type
4305870	Stylus \varnothing 1.0 mm, carbide, l = 14.5 mm	800 ts
4305850	Stylus \varnothing 2.0 mm, carbide, l = 14.5 mm	800 ts
4305871	Stylus \varnothing 3.0 mm, carbide, l = 14.5 mm	800 ts
4309051	Stylus \varnothing 2.0 mm, ruby, l = 14.5 mm	800 tsr
4305868	Spanner	



800 tb;800 tbr;800 te;800 ter;800 tl;800 tlr;800 ts;800 tsr;801 tl

FEATURES

With long stylus, for measurements at poorly accessible measuring points

- High-contrast dial face, sealed with O-ring
- Mineral glass viewing panel for best protection:
 - against cracking, scratching or damage caused by hot shavings
 - optimum resistance to solvents
- Matt chrome-plated protective casing with three integrated dovetail guide rails
- Shockproof measuring mechanism
- Anti-magnetic model
- Automatic adjustment to the contacting direction ensuring infallible readings
- Ball bearing mounted double lever
- Friction clutch overload protection
- **Package contains:** case, instruction manual, spanner for changing the styli, stylus dia. $\varnothing 2$ mm, mounting shaft 800a6 (800 SA/SGA/SGB), mounting shaft 800a8



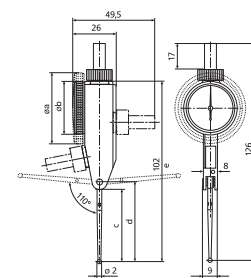
Application:

- Measurement of concentricity, alignment, parallelism and flatness
- Centering of bores and shafts
- Parallel or perpendicular alignment of work pieces

TECHNICAL DATA

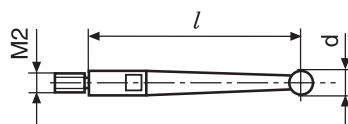
Order no.	4301300	4306200	4306250
Product type	800 SGB	800 SL	800 SGL
Measuring range	mm ± 0.5	mm ± 0.25	
Graduation value	mm	0.01	
Measuring surface		carbide	
Scale diameter	mm 38	mm 28	mm 38
Type of dial face	50–0–50	25–0–25	
Dial color		Yellow	
Measuring force	N	0.07	
Range per rev.	mm 1	mm 0.5	
Deviation range f_e	μm	10	
Total deviation range f_{ges}	μm	13	
Hysteresis f_u	μm 4	μm 5	
Partial measuring span f_t	μm	5	
Repeatability f_w	μm	3	
Standard		Factory standard	

Order no.	a	b	c	d	e	f	Measuring anvil length
	mm	mm	mm	mm	mm	mm	mm
4301300	40.5		31.4	35.7	93	117	32.3
4306200		30	40.3	44.6	102	126	41.24
4306250	40.5		40.3	44.6	102	126	41.24



ACCESSORIES

Order no.	Product name	Product type
4301851	Stylus $\varnothing 1.0$ mm, carbide, $l = 32.3$ mm	800 tb
4301850	Stylus $\varnothing 2.0$ mm, carbide, $l = 32.3$ mm	800 tb
4301852	Stylus $\varnothing 3.0$ mm, carbide, $l = 32.3$ mm	800 tb
4309052	Stylus $\varnothing 2.0$ mm, ruby, $l = 32.3$ mm	800 tbr
4305868	Spanner	
4306851	Stylus $\varnothing 1.0$ mm, carbide, $l = 41.24$ mm	800 tl
4306850	Stylus $\varnothing 2.0$ mm, carbide, $l = 41.24$ mm	800 tl
4306853	Stylus $\varnothing 3.0$ mm, carbide, $l = 41.24$ mm	800 tl
4309053	Stylus $\varnothing 2.0$ mm, ruby, $l = 41.24$ mm	800 tlr



800 tb;800 tbr;800 te;800 ter;800 tl;800 tlr;800 ts;800 tsr;801 tl

FEATURES

For high-precision measurements

- High-contrast dial face, sealed with O-ring
- Mineral glass viewing panel for best protection:
 - against cracking, scratching or damage caused by hot shavings
 - optimum resistance to solvents
- Matt chrome-plated protective casing with three integrated dovetail guide rails
- Shockproof measuring mechanism
- Anti-magnetic model
- Automatic adjustment to the contacting direction ensuring infallible readings
- Ball bearing mounted double lever
- Friction clutch overload protection
- **Package contains:** case, instruction manual, spanner for changing the styli, stylus dia. $\varnothing 2$ mm, mounting shaft 800a8



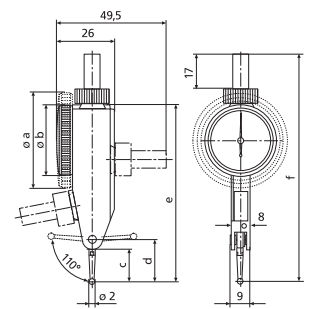
Application:

- Measurement of concentricity, alignment, parallelism and flatness
- Centering of bores and shafts
- Parallel or perpendicular alignment of work pieces

TECHNICAL DATA

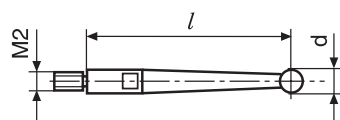
Order no.		4308150	4308200	4308205	4308250
Product type		800 SM	800 SGM	800 SGM-R	800 SRM
Measuring range	mm	± 0.1			± 0.2
Graduation value	mm	0.002			
Measuring surface		carbide		ruby	carbide
Scale diameter	mm	28	38		
Type of dial face		100–0–100			
Dial color		Yellow			
Measuring force	N	0.15			
Range per rev.	mm	0.2			
Deviation range f_e	μm	3			
Total deviation range f_{ges}	μm	4		5	
Hysteresis f_u	μm	2		3	
Partial measuring span f_t	μm	2			
Repeatability f_w	μm	1.5			
Standard		DIN 2270			Factory standard

Order no.	a	b	c	d	e	f	Measuring anvil length
	mm	mm	mm	mm	mm	mm	mm
4308150		30	13.6	17.8	75	99	14.5
4308200	40.5		13.6	17.8	75	99	14.5
4308205	40.5		13.6	17.8	75	99	14.5
4308250	40.5		13.6	17.8	75	99	14.5



ACCESSORIES

Order no.	Product name	Product type
4305870	Stylus $\varnothing 1.0$ mm, carbide, $l = 14.5$ mm	800 ts
4305850	Stylus $\varnothing 2.0$ mm, carbide, $l = 14.5$ mm	800 ts
4305871	Stylus $\varnothing 3.0$ mm, carbide, $l = 14.5$ mm	800 ts
4309051	Stylus $\varnothing 2.0$ mm, ruby, $l = 14.5$ mm	800 tsr
4305868	Spanner	



800 tb;800 tbr;800 te;800 ter;800 tl;800 tlr;800 ts;800 tsr;801 tl

FEATURES

- For high-precision measurements
- High-contrast dial face, sealed with O-ring
- Mineral glass viewing panel for best protection:
 - against cracking, scratching or damage caused by hot shavings
 - optimum resistance to solvents
- Matt chrome-plated protective casing with three integrated dovetail guide rails
- Shockproof measuring mechanism
- Anti-magnetic model
- Automatic adjustment to the contacting direction ensuring infallible readings
- Ball bearing mounted double lever
- Friction clutch overload protection
- **Package contains:** case, instruction manual, spanner for changing the styli, stylus dia. $\varnothing 2$ mm, mounting shaft 800a8



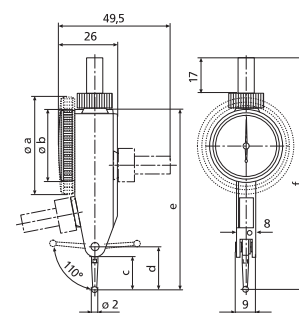
Application:

- Measurement of concentricity, alignment, parallelism and flatness
- Centering of bores and shafts
- Parallel or perpendicular alignment of work pieces

TECHNICAL DATA

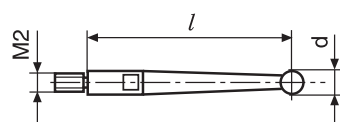
Order no.	4308220		
Product type	800 SGE		
Measuring range	mm	± 0.07	
Graduation value	mm	0.001	
Measuring surface	carbide		
Scale diameter	mm	38	
Type of dial face	70–0–70		
Dial color	Yellow		
Measuring force	N	0.2	
Range per rev.	mm	0.14	
Deviation range f_e	μm	3	
Total deviation range f_{ges}	μm	4	
Hysteresis f_u	μm	2	
Partial measuring span f_t	μm	2	
Repeatability f_w	μm	1.5	
Standard	Factory standard		

Order no.	a	c	d	e	f	Measuring anvil length
	mm	mm	mm	mm	mm	mm
4308220	40.5	8.3	12.5	70	94	9.15



ACCESSORIES

Order no.	Product name	Product type
4308851	Stylus $\varnothing 1.0$ mm, carbide, $l = 9.1$ mm	800 te
4308850	Stylus $\varnothing 2.0$ mm, carbide, $l = 9.1$ mm	800 te
4308852	Stylus $\varnothing 3.0$ mm, carbide, $l = 9.1$ mm	800 te
4309050	Stylus $\varnothing 2.0$ mm, ruby, $l = 9.1$ mm	800 ter
4305868	Spanner	



800 tb;800 tbr;800 te;800 ter;800 tl;800 tlr;800 ts;800 tsr;801 tl

FEATURES

For high-precision measurements

- High-contrast dial face, sealed with O-ring
- Mineral glass viewing panel for best protection:
 - against cracking, scratching or damage caused by hot shavings
 - optimum resistance to solvents
- Matt chrome-plated protective casing with three integrated dovetail guide rails
- Shockproof measuring mechanism
- Anti-magnetic model
- Automatic adjustment to the contacting direction ensuring infallible readings
- Ball bearing mounted double lever
- Friction clutch overload protection
- **Package contains:** case, instruction manual, spanner for changing the styli, stylus dia. \varnothing 2 mm, mounting shaft 800a3/8



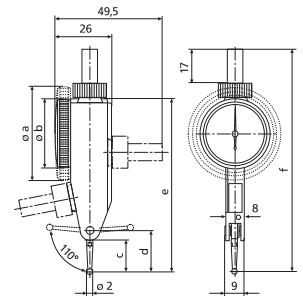
Application:

- Measurement of concentricity, alignment, parallelism and flatness
- Centering of bores and shafts
- Parallel or perpendicular alignment of work pieces

TECHNICAL DATA

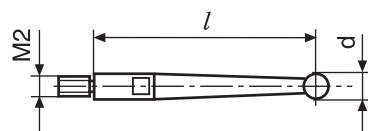
Order no.		4308960	4308970	4308980	4308985
Product type		801 SM	801 SGM	801 SRM	801 SGE
Measuring range	inch	$\pm .004''$		$\pm .008''$	$\pm .004''$
Graduation value	inch	.0001"			.00005"
Scale diameter	inch	1.1"	1.5"		
Type of dial face		4-0-4			
Dial color		Green			
Measuring force	N	0.15			
Range per rev.	inch	.008"			
Deviation range f_e	inch	.00012"			.0004"
Total deviation range f_{ges}	inch	.00016"	.0002"		.0005"
Hysteresis f_u	inch	.00008"		.00012"	
Partial measuring span f_t	inch	.00008"			.0002"
Repeatability f_w	inch	.0001"			
Standard		Factory standard			

Order no.	a	b	c	d	e	f	Measuring anvil length
	mm	mm	mm	mm	mm	mm	mm
4308960		30	13.6	17.8	75	99	14.5
4308970	40.5		13.6	17.8	75	99	14.5
4308980	40.5		13.6	17.8	75	99	14.5
4308985	40.5		13.6	17.8	75	99	14.5



ACCESSORIES

Order no.	Product name	Product type
4305850	Stylus \varnothing 2.0 mm, carbide, l = 14.5 mm	800 ts
4305870	Stylus \varnothing 1.0 mm, carbide, l = 14.5 mm	800 ts
4305871	Stylus \varnothing 3.0 mm, carbide, l = 14.5 mm	800 ts
4309051	Stylus \varnothing 2.0 mm, ruby, l = 14.5 mm	800 tsr
4305868	Spanner	



800 tb;800 tbr;800 te;800 ter;800 tl;800 tlr;800 ts;800 tsr;801 tl

FEATURES

Standard model

- High-contrast dial face, sealed with O-ring
- Mineral glass viewing panel for best protection:
 - against cracking, scratching or damage caused by hot shavings
 - optimum resistance to solvents
- Matt chrome-plated protective casing with three integrated dovetail guide rails
- Shockproof measuring mechanism
- Anti-magnetic model
- Automatic adjustment to the contacting direction ensuring infallible readings
- Ball bearing mounted double lever
- Friction clutch overload protection
- **Package contains:** case, instruction manual, spanner for changing the styli, stylus dia. \varnothing 2 mm, mounting shaft 800a3/8



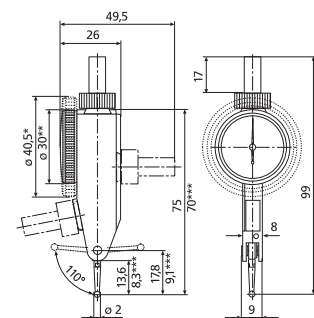
Application:

- Measurement of concentricity, alignment, parallelism and flatness
- Centering of bores and shafts
- Parallel or perpendicular alignment of work pieces

TECHNICAL DATA

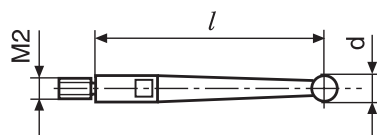
Order no.	4305950	4305960	4307950	4307960	4307970
Product type	801 S	801 S1	801 SG	801 SR	801 SGI
Measuring range	mm				± 0.3
Measuring range	inch	$\pm .015''$		$\pm .030''$	$\pm .015''$
Graduation value	mm				0.01
Graduation value	inch		.0005"		
Scale diameter	inch	1.1"	1.5"	1.1"	1.5"
Type of dial face			15-0-15		
Dial color			Green		
Measuring force	N		0.15		
Range per rev.	mm				0.6
Range per rev.	inch		.03"		
Deviation range f_e	inch		.0004"		
Total deviation range f_{ges}	inch		.0005"		
Hysteresis f_u	inch		.00012"	.0002"	.00012"
Partial measuring span f_t	inch		.0002"		
Repeatability f_w	inch		.0001"		
Standard			Factory standard		

Order no.	a	b	c	d	e	f	Measuring anvil length
	mm	mm	mm	mm	mm	mm	mm
4305950		30	13.6	17.8	75	99	14.5
4305960		30	13.6	17.8	75	99	14.5
4307950	40.5		13.6	17.8	75	99	14.5
4307960	40.5		13.6	17.8	75	99	14.5
4307970	40.5		13.6	17.8	75	99	14.5



ACCESSORIES

Order no.	Product name	Product type
4305870	Stylus \varnothing 1.0 mm, carbide, l = 14.5 mm	800 ts
4305850	Stylus \varnothing 2.0 mm, carbide, l = 14.5 mm	800 ts
4305871	Stylus \varnothing 3.0 mm, carbide, l = 14.5 mm	800 ts
4309051	Stylus \varnothing 2.0 mm, ruby, l = 14.5 mm	800 tsr
4305868	Spanner	



800 tb;800 tbr;800 te;800 ter;800 tl;800 tlr;800 ts;800 tsr;801 tl

FEATURES

With long stylus, for measurements at poorly accessible measuring points

- High-contrast dial face, sealed with O-ring
- Mineral glass viewing panel for best protection:
 - against cracking, scratching or damage caused by hot shavings
 - optimum resistance to solvents
- Matt chrome-plated protective casing with three integrated dovetail guide rails
- Shockproof measuring mechanism
- Anti-magnetic model
- Automatic adjustment to the contacting direction ensuring infallible readings
- Ball bearing mounted double lever
- Friction clutch overload protection
- Package contains: case, instruction manual, spanner for changing the styli, stylus dia. \varnothing 2 mm, mounting shaft 800a3/8



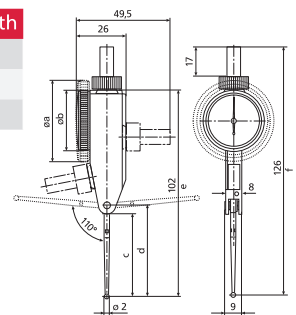
Application:

- Measurement of concentricity, alignment, parallelism and flatness
- Centering of bores and shafts
- Parallel or perpendicular alignment of work pieces

TECHNICAL DATA

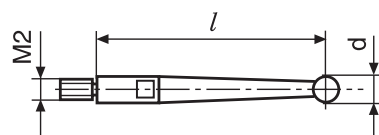
Order no.	4306950		4306960	
Product type	801 SL		801 SGL	
Measuring range	inch			$\pm .010''$
Graduation value	inch			.0005''
Scale diameter	inch	1.1''		1.5''
Type of dial face			10-0-10	
Dial color			Green	
Measuring force	N			0.07
Range per rev.	inch			.02''
Deviation range f_e	inch			.0004''
Total deviation range f_{ges}	inch			.0005''
Hysteresis f_u	inch			.0002''
Partial measuring span f_t	inch			.0002''
Repeatability f_w	inch			.0001''
Standard	Factory standard			

Order no.	a	b	c	d	e	f	Measuring anvil length
	mm	mm	mm	mm	mm	mm	mm
4306950		30	40.3	44.6	102	126	41.24
4306960	40.5		40.3	44.6	102	126	41.24



ACCESSORIES

Order no.	Product name	Product type
4306851	Stylus \varnothing 1.0 mm, carbide, l = 41.24 mm	800 tl
4306850	Stylus \varnothing 2.0 mm, carbide, l = 41.24 mm	800 tl
4306853	Stylus \varnothing 3.0 mm, carbide, l = 41.24 mm	800 tl
4309053	Stylus \varnothing 2.0 mm, ruby, l = 41.24 mm	800 tlr
4305868	Spanner	



800 tb;800 tbr;800 te;800 ter;800 tl;800 tlr;800 ts;800 tsr;801 tl

FEATURES

- Vertical model
- High-contrast dial face, sealed with O-ring
- Mineral glass viewing panel for best protection:
 - against cracking, scratching or damage caused by hot shavings
 - optimum resistance to solvents
- Matt chrome-plated protective casing with three integrated dovetail guide rails
- Shockproof measuring mechanism
- Anti-magnetic model
- Automatic adjustment to the contacting direction ensuring infallible readings
- Ball bearing mounted double lever
- Friction clutch overload protection
- Package contains: case, instruction manual, spanner for changing the styli, stylus dia. \varnothing 2 mm, mounting shaft 800a8



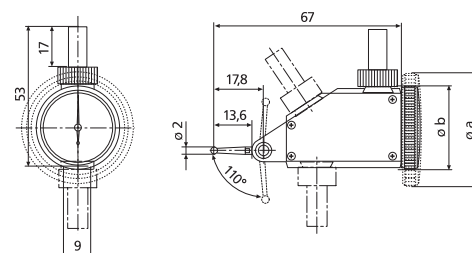
Application:

- Measurement of concentricity, alignment, parallelism and flatness
- Centering of bores and shafts
- Parallel or perpendicular alignment of work pieces

TECHNICAL DATA

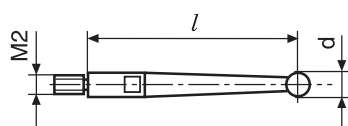
Order no.	4302200	
Product type	800 V	
Measuring range	mm	± 0.4
Graduation value	mm	0.01
Measuring surface	carbide	
Scale diameter	mm	28
Type of dial face	40-0-40	
Dial color	Yellow	
Measuring force	N	0.2
Range per rev.	mm	0.8
Deviation range f_e	μm	10
Total deviation range f_{ges}	μm	13
Hysteresis f_u	μm	3
Partial measuring span f_t	μm	5
Repeatability f_w	μm	3
Standard	DIN 2270	

Order no.	b	Measuring anvil length
	mm	mm
4302200	30	14.5



ACCESSORIES

Order no.	Product name	Product type
4305870	Stylus \varnothing 1.0 mm, carbide, l = 14.5 mm	800 ts
4305850	Stylus \varnothing 2.0 mm, carbide, l = 14.5 mm	800 ts
4305871	Stylus \varnothing 3.0 mm, carbide, l = 14.5 mm	800 ts
4309051	Stylus \varnothing 2.0 mm, ruby, l = 14.5 mm	800 tsr
4305868	Spanner	



800 tb;800 tbr;800 te;800 ter;800 tl;800 tlr;800 ts;800 tsr;801 tl



FEATURES

Vertical model

- High-contrast dial face, sealed with O-ring
- Mineral glass viewing panel for best protection:
 - against cracking, scratching or damage caused by hot shavings
 - optimum resistance to solvents
- Matt chrome-plated protective casing with three integrated dovetail guide rails
- Shockproof measuring mechanism
- Anti-magnetic model
- Automatic adjustment to the contacting direction ensuring infallible readings
- Ball bearing mounted double lever
- Friction clutch overload protection
- **Package contains:** case, instruction manual, spanner for changing the styli, stylus dia. \varnothing 2 mm, mounting shaft 800a3/8



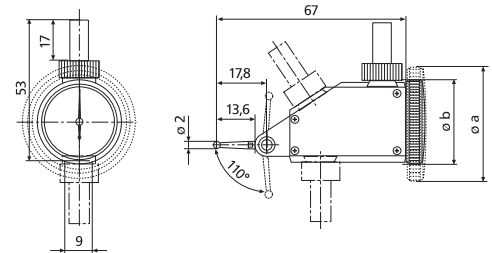
Application:

- Measurement of concentricity, alignment, parallelism and flatness
- Centering of bores and shafts
- Parallel or perpendicular alignment of work pieces

TECHNICAL DATA

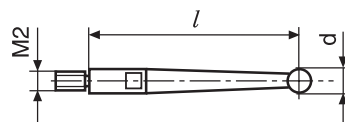
Order no.	4302950	
Product type	801 V	
Measuring range	inch	$\pm .015''$
Graduation value	inch	.0005''
Measuring surface	carbide	
Scale diameter	inch	1.1''
Type of dial face	15-0-15	
Dial color	Green	
Measuring force	N	0.2
Range per rev.	inch	.03''
Deviation range f_e	inch	.0004''
Total deviation range f_{ges}	inch	.0005''
Hysteresis f_u	inch	.00012''
Partial measuring span f_t	inch	.0002''
Repeatability f_w	inch	.0001''
Standard	Factory standard	

Order no.	b	Measuring anvil length
	mm	mm
4302950	30	14.5



ACCESSORIES

Order no.	Product name	Product type
4305870	Stylus \varnothing 1.0 mm, carbide, $l = 14.5$ mm	800 ts
4305850	Stylus \varnothing 2.0 mm, carbide, $l = 14.5$ mm	800 ts
4305871	Stylus \varnothing 3.0 mm, carbide, $l = 14.5$ mm	800 ts
4309051	Stylus \varnothing 2.0 mm, ruby, $l = 14.5$ mm	800 tsr
4305868	Spanner	



800 tb;800 tbr;800 te;800 ter;800 tl;800 tlr;800 ts;800 tsr;801 tl

FEATURES

- Vertical model
- High-contrast dial face, sealed with O-ring
- Mineral glass viewing panel for best protection:
 - against cracking, scratching or damage caused by hot shavings
 - optimum resistance to solvents
- Matt chrome-plated protective casing with three integrated dovetail guide rails
- Shockproof measuring mechanism
- Anti-magnetic model
- Automatic adjustment to the contacting direction ensuring infallible readings
- Ball bearing mounted double lever
- Friction clutch overload protection
- Package contains:** case, instruction manual, spanner for changing the styli, stylus dia. \varnothing 2 mm, mounting shaft 800a8



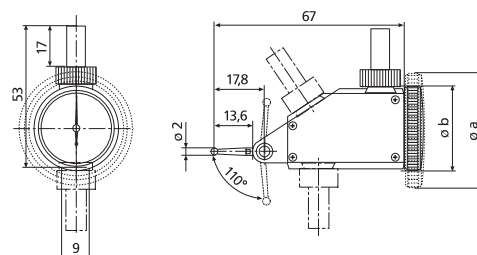
Application:

- Measurement of concentricity, alignment, parallelism and flatness
- Centering of bores and shafts
- Parallel or perpendicular alignment of work pieces

TECHNICAL DATA

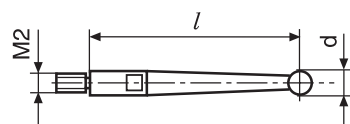
Order no.		4302250
Product type		800 VGM
Measuring range	mm	± 0.1
Graduation value	mm	0.002
Measuring surface		carbide
Scale diameter	mm	38
Type of dial face		100–0–100
Dial color		Yellow
Measuring force	N	0.25
Range per rev.	mm	0.2
Deviation range f_e	μm	3
Total deviation range f_{ges}	μm	4
Hysteresis f_u	μm	2
Partial measuring span f_t	μm	2
Repeatability f_w	μm	1.5
Standard		DIN 2270

Order no.	a	Measuring anvil length
	mm	mm
4302250	40.5	14.5



ACCESSORIES

Order no.	Product name	Product type
4305870	Stylus \varnothing 1.0 mm, carbide, $l = 14.5$ mm	800 ts
4305850	Stylus \varnothing 2.0 mm, carbide, $l = 14.5$ mm	800 ts
4305871	Stylus \varnothing 3.0 mm, carbide, $l = 14.5$ mm	800 ts
4309051	Stylus \varnothing 2.0 mm, ruby, $l = 14.5$ mm	800 tsr
4305868	Spanner	



800 tb;800 tbr;800 te;800 ter;800 tl;800 tlr;800 ts;800 tsr;801 tl

FEATURES

Vertical model

- High-contrast dial face, sealed with O-ring
- Mineral glass viewing panel for best protection:
 - against cracking, scratching or damage caused by hot shavings
 - optimum resistance to solvents
- Matt chrome-plated protective casing with three integrated dovetail guide rails
- Shockproof measuring mechanism
- Anti-magnetic model
- Automatic adjustment to the contacting direction ensuring infallible readings
- Ball bearing mounted double lever
- Friction clutch overload protection
- **Package contains:** case, instruction manual, spanner for changing the styli, stylus dia. \varnothing 2 mm, mounting shaft 800a3/8



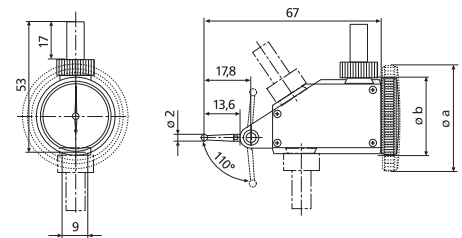
Application:

- Measurement of concentricity, alignment, parallelism and flatness
- Centering of bores and shafts
- Parallel or perpendicular alignment of work pieces

TECHNICAL DATA

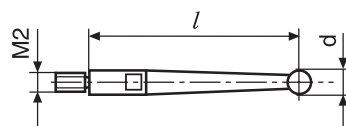
Order no.	4302960	
Product type	801 VGM	
Measuring range	inch	$\pm .004''$
Graduation value	inch	.0001''
Measuring surface	carbide	
Scale diameter	inch	1.5''
Type of dial face	4-0-4	
Dial color	Green	
Measuring force	N	0.25
Range per rev.	inch	.008''
Deviation range f_e	inch	.00012''
Total deviation range f_{ges}	inch	.00016''
Hysteresis f_u	inch	.00008''
Partial measuring span f_t	inch	.00008''
Repeatability f_w	inch	.0001''
Standard	Factory standard	

Order no.	a	Measuring anvil length
	mm	mm
4302960	40.5	14.5



ACCESSORIES

Order no.	Product name	Product type
4305870	Stylus \varnothing 1.0 mm, carbide, l = 14.5 mm	800 ts
4305850	Stylus \varnothing 2.0 mm, carbide, l = 14.5 mm	800 ts
4305871	Stylus \varnothing 3.0 mm, carbide, l = 14.5 mm	800 ts
4309051	Stylus \varnothing 2.0 mm, ruby, l = 14.5 mm	800 tsr
4305868	Spanner	



800 tb;800 tbr;800 te;800 ter;800 tl;800 tlr;800 ts;800 tsr;801 tl

FEATURES

- Horizontal model
- High-contrast dial face, sealed with O-ring
- Mineral glass viewing panel for best protection:
 - against cracking, scratching or damage caused by hot shavings
 - optimum resistance to solvents
- Matt chrome-plated protective casing with three integrated dovetail guide rails
- Shockproof measuring mechanism
- Anti-magnetic model
- Automatic adjustment to the contacting direction ensuring infallible readings
- Ball bearing mounted double lever
- Friction clutch overload protection
- Package contains: case, instruction manual, spanner for changing the styli, stylus dia. \varnothing 2 mm, mounting shaft 800a8



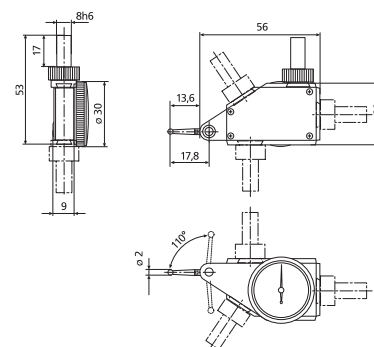
Application:

- Measurement of concentricity, alignment, parallelism and flatness
- Centering of bores and shafts
- Parallel or perpendicular alignment of work pieces

TECHNICAL DATA

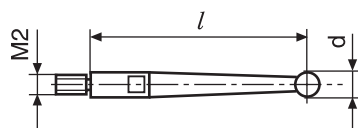
Order no.	4303200	
Product type		800 H
Measuring range	mm	± 0.4
Graduation value	mm	0.01
Measuring surface		carbide
Scale diameter	mm	28
Type of dial face		40–0–40
Dial color		Yellow
Measuring force	N	0.25
Range per rev.	mm	0.8
Deviation range f_e	μm	10
Total deviation range f_{ges}	μm	13
Hysteresis f_u	μm	3
Partial measuring span f_t	μm	5
Repeatability f_w	μm	3
Standard		DIN 2270

Order no.	Measuring anvil length
	mm
4303200	14.5



ACCESSORIES

Order no.	Product name	Product type
4305870	Stylus \varnothing 1.0 mm, carbide, l = 14.5 mm	800 ts
4305850	Stylus \varnothing 2.0 mm, carbide, l = 14.5 mm	800 ts
4305871	Stylus \varnothing 3.0 mm, carbide, l = 14.5 mm	800 ts
4309051	Stylus \varnothing 2.0 mm, ruby, l = 14.5 mm	800 tsr
4305868	Spanner	



800 tb;800 tbr;800 te;800 ter;800 tl;800 tlr;800 ts;800 tsr;801 tl

FEATURES

- Horizontal model
- High-contrast dial face, sealed with O-ring
 - Mineral glass viewing panel for best protection:
 - against cracking, scratching or damage caused by hot shavings
 - optimum resistance to solvents
 - Matt chrome-plated protective casing with three integrated dovetail guide rails
 - Shockproof measuring mechanism
 - Anti-magnetic model
 - Automatic adjustment to the contacting direction ensuring infallible readings
 - Ball bearing mounted double lever
 - Friction clutch overload protection
 - **Package contains:** case, instruction manual, spanner for changing the styli, stylus dia. \varnothing 2 mm, mounting shaft 800a3/8



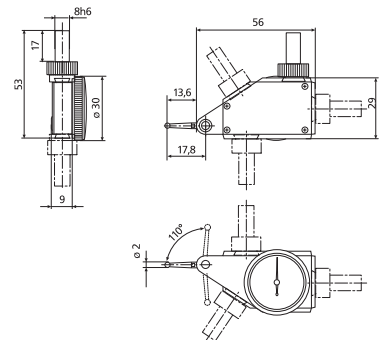
Application:

- Measurement of concentricity, alignment, parallelism and flatness
- Centering of bores and shafts
- Parallel or perpendicular alignment of work pieces

TECHNICAL DATA

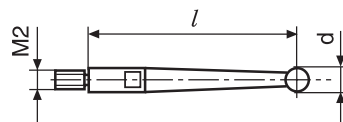
Order no.	4303950	
Product type	801 H	
Measuring range	inch	$\pm .015''$
Graduation value	inch	.0005''
Measuring surface	carbide	
Scale diameter	inch	1.1''
Type of dial face	15–0–15	
Dial color	Green	
Measuring force	N	0.25
Range per rev.	inch	.03''
Deviation range f_e	inch	.0004''
Total deviation range f_{ges}	inch	.0005''
Hysteresis f_u	inch	.00012''
Partial measuring span f_t	inch	.0002''
Repeatability f_w	inch	.0001''
Standard	Factory standard	

Order no.	Measuring anvil length
	mm
4303950	14.5



ACCESSORIES

Order no.	Product name	Product type
4305870	Stylus \varnothing 1.0 mm, carbide, l = 14.5 mm	800 ts
4305850	Stylus \varnothing 2.0 mm, carbide, l = 14.5 mm	800 ts
4305871	Stylus \varnothing 3.0 mm, carbide, l = 14.5 mm	800 ts
4309051	Stylus \varnothing 2.0 mm, ruby, l = 14.5 mm	800 tsr
4305868	Spanner	



800 tb;800 tbr;800 te;800 ter;800 tl;800 tlr;800 ts;800 tsr;801 tl