

Dial Indicator

FEATURES

- Shockproof movement
- High contrast dial face
- Adjustable tolerance markers
- Chrome plated housing
- Lifter protection cap on the measuring spindle
- Precision gears and pinions
- Package contains: case



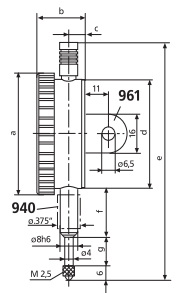
Application:

The measuring pin is retracted by spring, contacting and the measuring force are triggered manually (by hand) by touching the button on the upper sleeve

TECHNICAL DATA

Order no.		4311000	4311050	4311060	4321000	4329050
Product type		810 S	810 A	810 AT	810 SV	810 AU
Measuring span	mm		10		40	10
Graduation value	mm			0.01		
Type of dial face			0 – 100	100 – 0	0 – 100	100 – 0
Range per rev.	mm			1		
Error limit, measuring range	µm		15		25	15
Error limit, 1 revolution	µm		10		15	10
Error limit, 1/2 revolution	µm		9		10	9
Error limit, 1/10 revolution	µm			5		
Repeatability f_w	µm		3			5
Hysteresis f_u	µm		3		6	5
Overtravel	mm	0.1		0.8		0.1
Measuring force incoming measuring pin			0.7 – 1.3		0.8 – 1.8	-
Standard			DIN 878		Factory standard	
Shockproof movement		•			•	
Lifting protection cap				•		
Reverse measuring force direction						•
Dial color				White		

Order no.	a	b	c	d	e	f	g	Mounting shaft diameter	Scale diameter
4311000	mm	mm	mm	mm	mm	mm	mm	mm	mm
4311050	58	23	7.5	52	112	21	16	8	50
4311060	58	23	7.5	52	112	22	15	8	50
4321000	58	24.2	8.7	52	169	22	45	8	50
4329050	58	23	7.5	52	112	22	4.5	8	50



ACCESSORIES

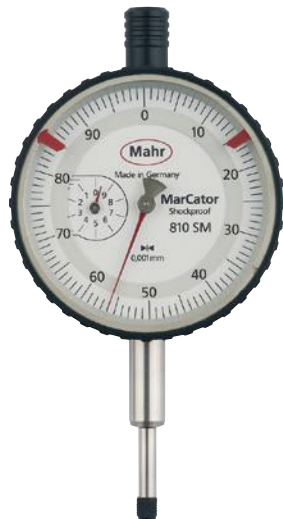
Order no.	Product name	Product type
4310103	Adapter bush (.375" / 8 mm)	940
4373020	Splash proof cap (58 mm)	955
4375010	Lug back, vertical, for 810	961
4375011	Lug back, horizontal, for 810	962

MarCator 810 SM / 810 SRM

Dial Indicator

FEATURES

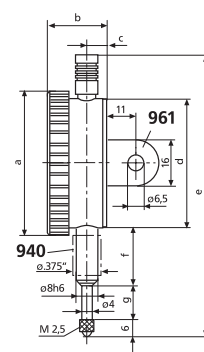
- High contrast dial face
- Adjustable tolerance markers
- Chrome plated housing
- Lifter protection cap on the measuring spindle
- Precise mechanism with a combined gear lever transmission
- High accuracy with a minimum span of error
- Package contains: case



TECHNICAL DATA

Order no.	4311070		4311080	
Product type	810 SM		810 SRM	
Measuring span	mm	1	5	
Graduation value	mm	0.001		
Type of dial face	0–100		0–100–0	
Range per rev.	mm	0.1	0.2	
Error limit, measuring range	µm	4	10	
Error limit, 1 revolution	µm	3	5	
Error limit, 1/2 revolution	µm	2	3	
Error limit, 1/10 revolution	µm	1	2	
Repeatability f_w	µm	1.5	3	
Hysteresis f_u	µm	1.5	3	
Overtravel	mm	4	0.1	
Measuring force incoming measuring pin	1.3–1.8		1.2–1.7	
Standard	Factory standard			
Shockproof movement	•			
Lifting protection cap	•			

Order no.	a	b	c	d	e	f	g	Mounting shaft	Scale diameter
	mm	mm	mm	mm	mm	mm	mm	mm	mm
4311070	58	23	8.5	52	111.5	22	15	8	50
4311080	58	23	7.5	52	111.5	22	15	8	50



ACCESSORIES

Order no.	Product name	Product type
4310103	Adapter bush (.375" / 8 mm)	940
4373020	Splash proof cap (58 mm)	955
4375010	Lug back, vertical, for 810	961
4375011	Lug back, horizontal, for 810	962

MarCator 810 AX

Dial Indicator

FEATURES

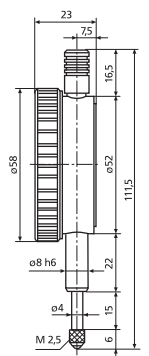
- High contrast dial face
- Adjustable tolerance markers
- Chrome plated housing
- Lifter protection cap on the measuring spindle
- Precision gears and pinions
- Package contains: case



TECHNICAL DATA

Order no.	4331000	
Product type	810 AX	
Measuring span	mm	10
Graduation value	mm	0.1
Type of dial face	0 – 10	
Range per rev.	mm	10
Error limit, measuring range	µm	50
Error limit, 1 revolution	µm	50
Error limit, 1/2 revolution	µm	30
Error limit, 1/10 revolution	µm	15
Repeatability f_w	µm	15
Hysteresis f_u	µm	15
Overtravel	mm	0.5
Measuring force incoming measuring pin	0.7 – 1.3	
Standard	Factory standard	
Lifting protection cap	•	
Dial color	White	

Order no.	Mounting shaf	Scale diameter
4331000	mm 8	mm 50



ACCESSORIES

Order no.	Product name	Product type
4310103	Adapter bush (.375" / 8 mm)	940
4373020	Splash proof cap (58 mm)	955
4375010	Lug back, vertical, for 810	961
4375011	Lug back, horizontal, for 810	962

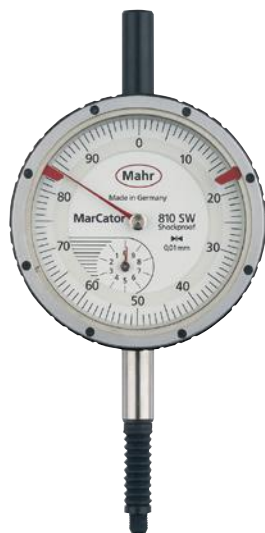
MarCator 810 SW / 803 SW

Water- and dust-resistant Dial Indicator



FEATURES

- High contrast dial face
 - Adjustable tolerance markers
 - Chrome plated housing
 - Precision gears and pinions
 - Hermetically sealed upper protective measuring spindle cap, bezel and transparent dial cover; sealed with O-rings
 - Measuring spindle sealed with rubber sleeve, thus preventing contamination by liquids and impurities
- IP protection category: IP 54
 - Package contains: case



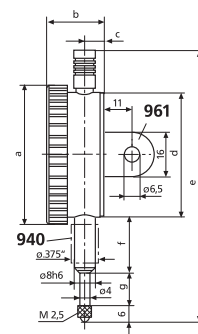
Application:

At the place of measurement where the dial indicator is exposed to extreme contamination or moisture

TECHNICAL DATA

Order no.	4315000		4326000	
Product type	810 SW		803 SW	
Measuring span	mm	10	3	
Graduation value	mm	0.01		
Type of dial face	0 – 100		0 – 50	
Range per rev.	mm	1	0.5	
Error limit, measuring range	µm	15	10	
Error limit, 1 revolution	µm	10	9	
Error limit, 1/2 revolution	µm	9	8	
Error limit, 1/10 revolution	µm	5		
Repeatability f_w	µm	3		
Hysteresis f_u	µm	3		
Overtravel	mm	0.7 – 1.6	0.1	
Measuring force incoming measuring pin	0.7 – 1.6		0.7 – 1.7	
Standard	DIN 878			
Shockproof movement	•			
Protective measuring spindle cap	•			
Dial color	White			

Order no.	a	b	c	d	e	f	g	Mounting shaft
	mm	mm	mm	mm	mm	mm	mm	mm
4315000	61	24.2	7.9	52	127.6	22	22.1	8
4326000	44	21.6	7.1	37	86	15	11	8



ACCESSORIES

Order no.	Product name	Product type
4310103	Adapter bush (.375" / 8 mm)	940
4375010	Lug back, vertical, for 810	961
4375011	Lug back, horizontal, for 810	962
4375020	Lug back, vertical, for 803	966
4375021	Lug back, horizontal, for 803	967

FEATURES

- High contrast dial face
- Adjustable tolerance markers
- Chrome plated housing
- Hermetically sealed protective measuring spindle cap
- Limited measuring range for error free readings
- Large overtravel (ca. 9 mm) for easier insertion of test items in measuring devices
- Precision gears and pinions
- Package contains: case



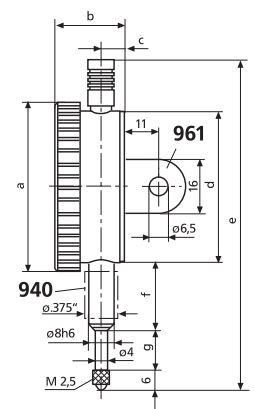
Application:

For safety reasons, the indication range of these dial indicators is limited to just under one pointer rotation. This prevents the risk of measuring errors arising from possible additional pointer rotations.

TECHNICAL DATA

Order no.	4317000		4324250	
Product type	810 SB		803 SB	
Measuring span	mm	0.8	0.4	
Graduation value	mm	0.01		
Type of dial face	40 –0 –40		20 –0 –20	
Range per rev.	mm	0.8		
Error limit, measuring range	µm	7		
Error limit, 1/2 revolution	µm	6		
Error limit, 1/10 revolution	µm	5		
Repeatability f_w	µm	3		
Hysteresis f_u	µm	3		
Overtravel	mm	9	4.5	
Measuring force incoming measuring pin	0.9 –1.1		0.7 –1.1	
Standard	DIN 878			
Shockproof movement	•			
Protective measuring spindle cap	•			
Dial color	White			

Order no.	a	b	c	d	e	f	g	Mounting shaft
	mm	mm	mm	mm	mm	mm	mm	mm
4317000	58	23	7.5	52	120	22	15	8
4324250	44	21.6	6.8	37	83	15.5	8	8



ACCESSORIES

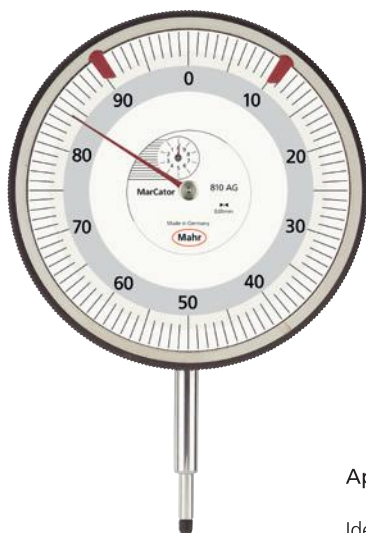
Order no.	Product name	Product type
4310103	Adapter bush (.375" / 8 mm)	940
4375010	Lug back, vertical, for 810	961
4375011	Lug back, horizontal, for 810	962
4375020	Lug back, vertical, for 803	966
4375021	Lug back, horizontal, for 803	967

MarCator 810 AG

Large Dial Indicator

FEATURES

- Large, high contrast dial face
- Adjustable tolerance markers
- Chrome plated housing
- Lifter protection cap on the measuring spindle
- Precision gears and pinions



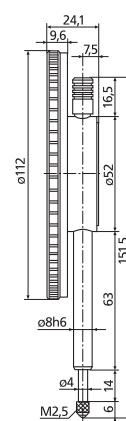
Application:

Ideal for long reading distance and in poorly lit conditions

TECHNICAL DATA

Order no.	4322000		
Product type	810 AG		
Measuring span	mm	10	
Graduation value	mm	0.01	
Type of dial face	0 – 100		
Range per rev.	mm	1	
Error limit, measuring range	µm	17	
Error limit, 1 revolution	µm	15	
Error limit, 1/2 revolution	µm	10	
Error limit, 1/10 revolution	µm	5	
Repeatability f_w	µm	3	
Hysteresis f_u	µm	5	
Overtravel	mm	0.1	
Measuring force incoming measuring pin	1.3 – 2.2		
Standard	Factory standard		
Lifting protection cap	•		
Dial color	White		

Order no.	Mounting shaft	Scale diameter
	mm	mm
4322000	8	112



ACCESSORIES

Order no.	Product name	Product type
4310103	Adapter bush (.375" / 8 mm)	940